



1 WESTGATE

A traditional pub offering a warm welcome alongside a large selection of beers, lagers and spirits.

69 GUILDHALL STREET, BURY ST EDMUNDS, IP33 1QD
www.thewestgatepub.co.uk
OPEN: MON & TUES 2PM-10PM, WEDS & THURS 2PM-11PM, FRI 1PM-12AM, SAT 12PM-MIDNIGHT, SUN 12PM-6PM



2 THE MASONS ARMS

A traditional pub with a glass viewing area to the beer cellar below. A quiz night is hosted every Tuesday.

14 WHITING STREET, BSE, IP33 1NX
www.masonspub.co.uk
OPEN: SUN-THURS 12:00-11:30, SAT 11:00-MIDNIGHT



3 BOOSH

Cocktail bar and restaurant in the heart of Bury St Edmunds town centre.

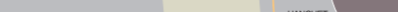
2 ABBEGATE STREET, BSE, IP33 1UL
www.ourburystedmunds.com/boosh
SUN-MON 10:00-18:00, TUE-WED 10:00-23:30, THURS 10:00-MIDNIGHT, FRI-SAT 10:00-01:00



4 THE NUTSHELL

The Nutshell is Britain's Smallest Pub, and has a selection of real ales.

17 THE TRAVERSE, BSE, IP33 1BJ
www.thenutshellpub.co.uk
OPEN: MON-THURS 11AM-11PM, FRI-SAT 11AM-MIDNIGHT, SUN 11.30AM-10.30PM



5 THE CORN EXCHANGE

The Corn Exchange is the Bury St Edmunds Wetherspoons pub offering great value food and drinks and often has guest ales on tap.

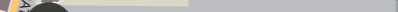
57 ABBEGATE STREET, BSE, IP33 1BE
www.jdwetherspoon.co.uk
OPEN: SUN-THURS 07:00-23:00, FRI & SAT 07:00-00:30



6 THE CONSTITUTIONAL CLUB

The Constitutional Club hosts events and has a private members' bar serving real ales.

12 GUILDHALL STREET, BSE, IP33 1PR
www.conclubbse.com
OPEN MON, TUE, THUR 16:30-23:00, WED & FRI 12:00-23:00, SAT 12:00-14:00, SUN 15:00-23:00



7 DOG & PARTRIDGE

A pub that can morph through the day. From brunch and lunch, to beer and bar snacks, as well as the place to be for a big night out.

29 CROWN STREET, BURY ST EDMUNDS, IP33 1QU
www.greeneking-pubs.co.uk/pubs/suffolk/dog-partridge/
OPEN: MON-SAT 10AM-11PM, SUN 10AM-10:30PM



8 OAKES BARN

A traditional free house serving a wide selection of real ales and craft beer. Oakes Barn is a community hub with historic links to the medieval town.

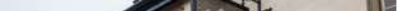
ST ANDREWS ST SOUTH, BSE, IP33 3PH
www.oakesbarn.co.uk
OPEN: MON-SAT 11:00-23:00, SUNDAY 12:00-17:30



9 VERVE

The town's newest cocktail bar and restaurant boasting two floors of space to drink, dine, and socialise with friends.

1-2 WOOLHALL STREET, BURY ST EDMUNDS, IP33 1LR
www.vervebar.co.uk
OPEN: WEDS 11AM-11PM, THURS 11AM-1AM, FRI 11AM-2:30AM, SAT 11AM-3AM



10 THE GRAPES

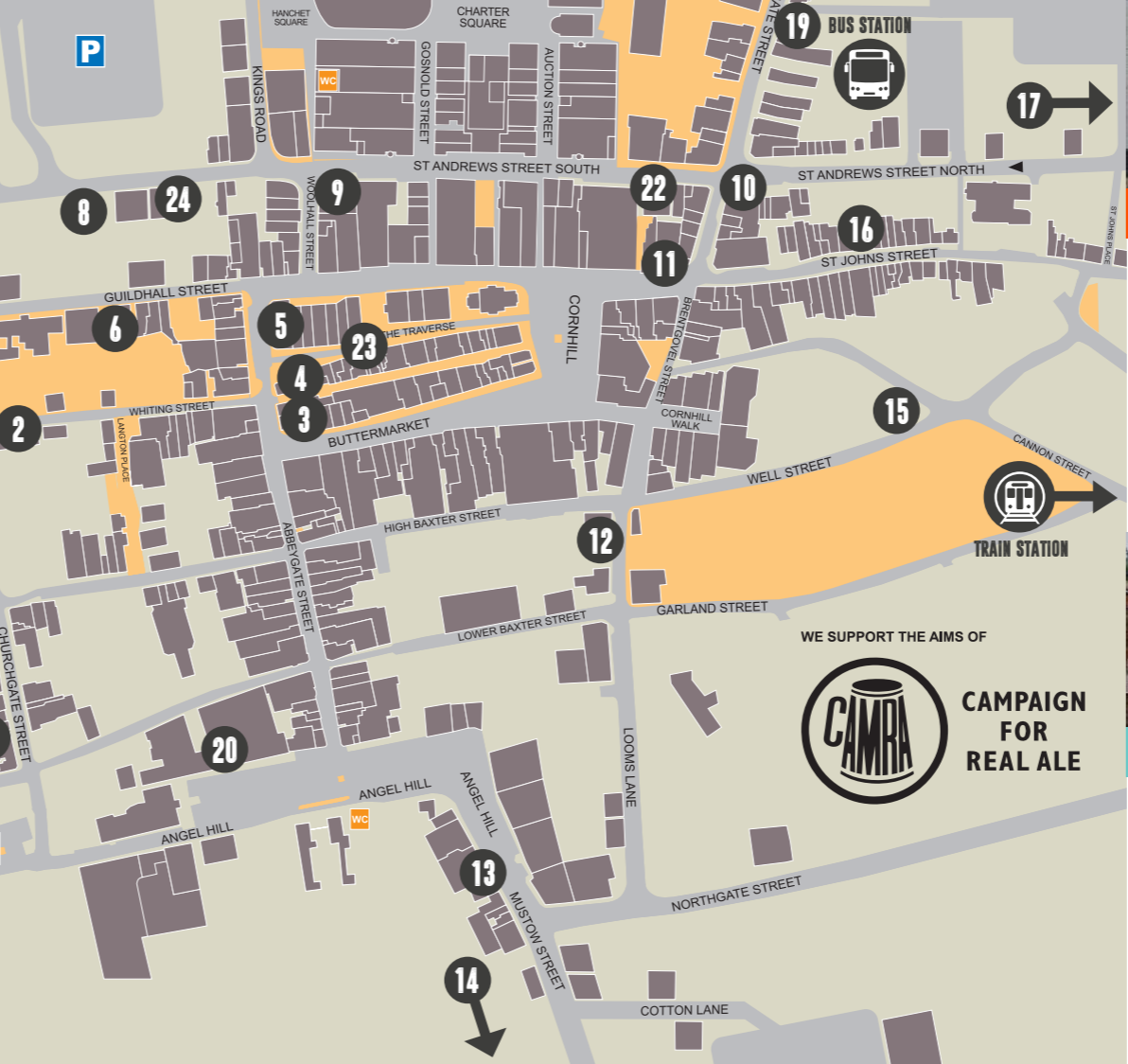
A traditional pub based right in the heart of Bury St Edmunds, offering excellent value food and live music and karaoke nights.

1 BRENTGROVEL ST, BSE, IP33 1ER
www.greeneking-pubs.co.uk
OPEN: SUN-WEDS 10.00-23.00, THURS 10.00-MIDNIGHT, FRI & SAT 10.00-01.00



KEY

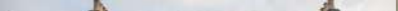
- FREE WIFI
- DOG ACCEPTED
- KIDS WELCOME
- OVERNIGHT ACCOMMODATION
- OUTDOOR SEATS
- SERVES FOOD
- LIVE MUSIC
- BABY CHANGE
- DOGS ACCEPTED
- EASY ACCESS
- SMOKING AREA
- FUNCTION ROOM
- ENDORSED BY WEST SUFFOLK BRANCH OF CAMRA (CAMPAIGN FOR REAL ALE)



11 EDMUNDO LOUNGE

Based on the corner site off Cornhill, Edmundo Lounge is a very historical-inspired venue with William Morris wallpaper and lots of leather seating.

28 CORNHILL, BSE, IP33 1DY
www.thelounges.co.uk/edmundo
OPEN: SUN-THURS 09:00-23:00, FRI & SAT 09:00-MIDNIGHT



12 KINGS ARMS

The Kings Arms offers traditional pub fayre with a contemporary twist and has a spacious outdoor dining area.

22 BRENTGROVEL STREET, BSE, IP33 1EB
www.kingsarms-burystedmunds.co.uk
OPEN: DAILY 11:00-23:00



13 THE ONE BULL

The One Bull offers fresh seasonal, regional food, an award winning wine list & Brewshed beers from its own craft brewery just down the road.

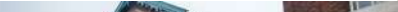
25 ANGEL HILL, BSE, IP33 1UZ
www.theonebull.co.uk
OPEN: MON-THURS 12:00-23:00, FRI & SAT 12:00-MIDNIGHT, SUN 12:00-18:00



14 THE FOX INN

A 15th century inn offering a cosy environment to eat and drink in.

1 EASTGATE STREET, BSE, IP33 1XX
www.oldenglishinns.co.uk
OPEN: MON-FRI 07:00-23:00, SAT & SUN 08:00-23:00



19 CASA

A Mediterranean bar and restaurant in a beautifully decorated historic building.

98 RISBYGATE ST, BSE, IP33 3AA
www.casabse.co.uk
OPENING TIMES: TUES-THURS 12.00-15.00 & 17.00-22.00, FRIDAY 12.00-15.00 & 17.00-23.00, SAT 12.00-23.00



20 THE ANGEL HOTEL

An iconic hotel on Angel Hill with a relaxed bar area serving 7 different cask ales and beers with one developed by the hotel itself and is brewed locally.

3 ANGEL HILL, BSE, IP33 1LT
www.theangel.co.uk
OPEN: MON-SUN 07.00-23.00



21 QUEENS BAR AND GRILL

Queens is a new Bar & Grill set in one of Bury's oldest free houses serving American-inspired dishes and a variety of ales and craft beers.

39 CHURCHGATE STREET, BSE, IP33 1RG
www.queensbse.co.uk
OPEN: TUES-THURS 18:00-23:00, SAT 12:00-24:00, SUN 12:00-18:00



22 KAROOZE

Café and bar serving food in the daytime and offering drinks and a DJ in the evenings.

50 ST ANDREWS STREET SOUTH, BSE, IP33 1SD
www.ourburystedmunds.com/karooze
OPEN: MON-SAT 20:30-02:00, SUN 19:00-02:00



23 NETHERGATE

For over three decades Nethergate Brewery has crafted a range of multi-award-winning beers, a beloved craft lager and now, with our newly installed distillery, a growing range of Spirits.

11 THE TRAVERSE, BURY ST EDMUNDS, IP33 1BJ
www.nethergate.co.uk
OPEN: WED-SAT 10:00-18:00, SUN 10:00-16:00 (CLOSED MON-TUES)



24 VESPERS

Vespers is a speciality Belgian beer bar serving a vast selection of beers ranging from easy-drinking blonde beers to historic Trappist ales.

THE OLD STABLES, ST ANDREWS STREET SOUTH, BURY ST EDMUNDS, IP33 3PH
www.vespersbar.co.uk
OPEN: WED-SUN 12PM-23.00PM

